



SCRAM™

G P S

Not all GPS technologies are created equal.

SCRAM Systems® is proud to offer SCRAM GPS™—the newest product in our suite of alcohol and location monitoring technologies.



SCRAM Continuous Alcohol Monitoring®

Continuous Alcohol Monitoring (CAM), or combined CAM + House Arrest, at the flip of a switch. It's 24/7 monitoring for your high-risk/high-need alcohol clients.

SCRAM Remote Breath®

The first and only handheld, wireless, portable breath alcohol device with automated facial recognition and GPS with every single test. For your lower-risk clients or those who need or have earned less intensive monitoring.

SCRAM GPS™

A one-piece Global Positioning System that combines superior location monitoring accuracy and 2-way communication with an industry-leading strap design that virtually eliminates false alerts. SCRAM Systems offers GPS solutions on all cellular networks to provide comprehensive location monitoring options.

SCRAM House Arrest®

Standalone house arrest monitoring built to work with today's home communications systems. Operates over Internet routers, standard or digital phone lines, DSL, Vonage®, or an optional SCRAM-provided wireless system.

SCRAM Systems Program Management Center™

The SCRAMNET™ secure web application is the core of the Project Management Center (PMC), which brings together everything from monitoring of our entire product line to our best-in-industry court support program, 24/7 customer support, mobile applications, client compliance analytics, and beyond.

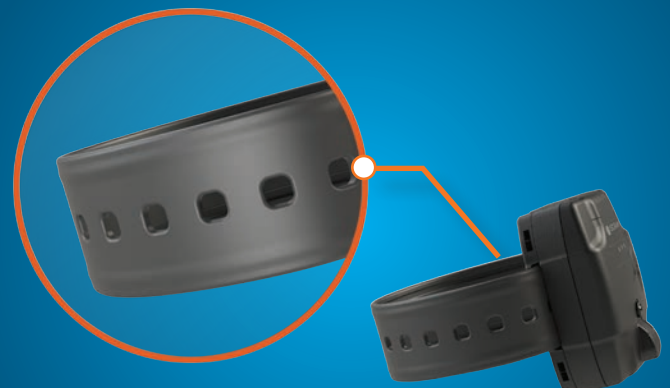
Open Strap, Closed Strap. There is Nothing in Between.

SCRAM GPS uses a strap design that is different from other GPS products, essentially eliminating intermittent strap disruptions that are responsible for the system-imposed grace periods required to manage false alerts in other GPS technologies.

The detection of removal is nearly instantaneous with SCRAM GPS. An OPEN alert means an OPEN strap.

No waiting, no guessing, no reason to doubt.

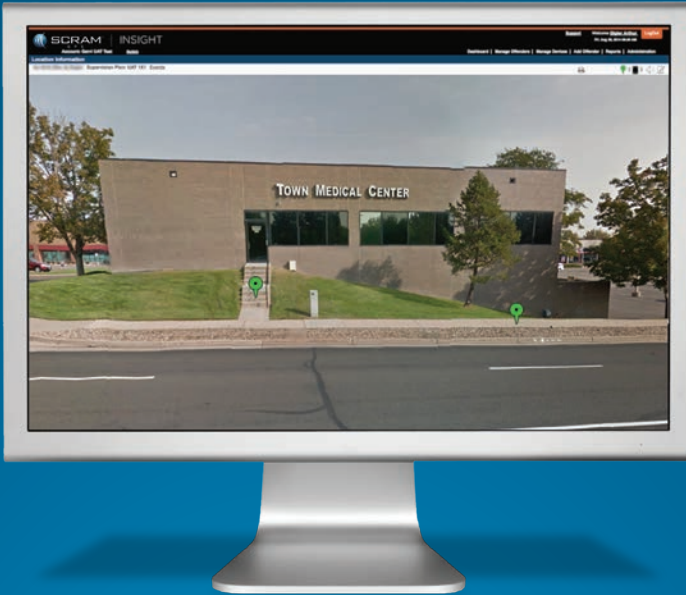
- No grace periods.
- No wait times.
- No confusion between “alerts” and “events.”



Accuracy You Can See

Bird's eye maps can show you a GPS-tracked participant's movements. But does that really tell you everything you need to know?

SCRAM GPS combines exceptional accuracy with modern, street-level map views to put clients' movements in context and provide better supervision data.



Client management software that fits your needs

Caseload information at a glance, 24/7

Detailed reports available to view, download, or send for use in court

Select	Offender	Locator Battery	Equipment	Location	Zones	Notes	Map	Events
▶	Doe, Jane							Details
▶	Smith, Tom							Details
▶	Jones, Bill							Details
▶	Smith, Kim							Details
▶	Jones, Jane							Details
▶	Doe, Bob							Details
▶	Smith, John							Details
▶	Doe, Bob							Details
▶	Jones, Sue							Details
▶	Smith, Jill							Details
▶	Doe, Mary							Details
▶	Smith, Jane							Details

Easily view client alerts

FEATURES

- Slim one-piece design
- 40+ hours of battery life
- Industry-leading strap design
- Reliable GPS and A-GPS location technology
- 2-way client communication
- Extreme temperature, shock, and impact resistance
- Waterproof
- A cut-free strap
- RF Base Station
- 30-second, tool-free installation

BENEFITS

- Revolutionary strap design and reliable tamper technology substantially reduce false alerts
- Track and communicate with clients 24/7
- An integrated component of the SCRAM Systems suite of products. One company, same SCRAM Provider Network, best-in-industry technologies
- Customizable inclusion/exclusion zones allow for tailoring supervision to the risks of the client and the needs of the community
- Easily compare location data for a single client or all participants to a specific address

Follow us at:

